



Typical Applications

- Highly dynamic fatigue testing of components.
- Structural fatigue tests.
- Vehicle durability tests.

Standard Features

- Fatigue rated design for years of reliable service in demanding applications.
- Double ended, one piece piston-rod design combines balanced dynamic performance with higher side-loading capacity.
- PTFE
- PTFE high pressure seals are used for low friction and exceptional life in high frequency, small displacement applications. A low pressure wiper provides a secondary seal and minimizes contamination of the bearing and seals by scraping the rod.
- Bonded polymer bearings resist rod and bearing wear during high velocity operation.
- LVDT
- Internal LVDT provides the displacement signal for position feedback in a closed loop servocontrol application.

- Hydraulic cushions protect the end caps during full stroke, high velocity operation.

244

244 Actuator Options

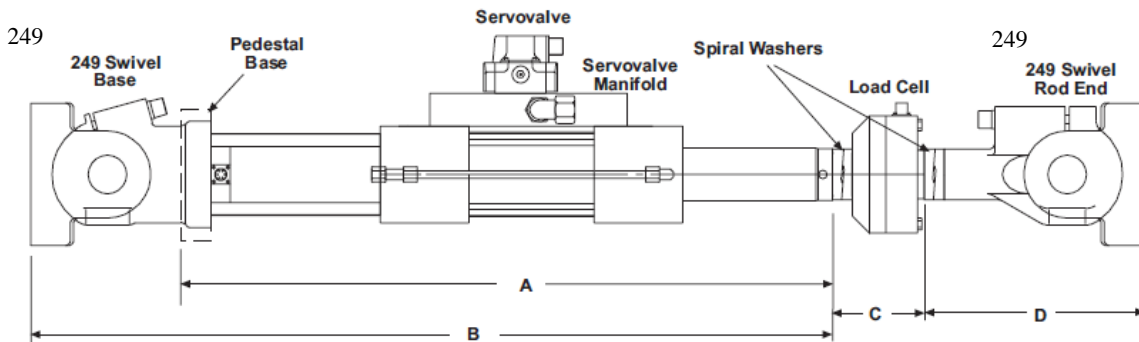
- 244
- 150mm 6 250mm 10

Stroke Lengths – The 244 Actuator is available in standard stroke lengths of 150mm (6 in.) and 250mm (10 in.). Other non-standard strokes are

	KN	lbs	mm	inches		
244.11	15	3,300	150 250	6 10	M12x1.25	1/2"-20
244.12	25	5,500	150 250	6 10	M12x1.25	1/2"-20
244.21	50	11,000	150 250	6 10	M27x2	1"-14
244.22	100	22,000	150 250	6 10	M27x2	1"-14
244.23	150	35,000	150 250	6 10	M27x2	1"-14
244.31	250	55,000	150 250	6 10	M36x2	1 1/2"-12
244.41	500	110,000	150 250	6 10	M52x2	2"-12
244.51	1000	220,000	150 250	6 10	M76x2	3"-12

Typical Configurations for Component or Structural Testing Applications

Model	Servo valve	Load Cell	Swivel	Spiral Washers
244.11	252.2X (qty 1 or 2), 252.3X (qty 1)	661.19E/F-03	249.12	Optional
244.12	252.2X (qty 1 or 2), 252.3X (qty 1)	661.19E/F-04	249.12	Optional
244.21	252.2X (qty 1 or 2), 252.3X (qty 1)	661.20E/F-02	249.20	Optional
244.22	252.2X (qty 1 or 2), 252.3X (qty 1)	661.20E/F-03	249.23	601.11-11
244.23	252.2X (qty 1 or 2), 252.3X (qty 1)	661.22C/D-01	249.23	601.11-11
244.31	252.2X (qty 1 or 2), 252.3X (qty 1), 256 (qty 1)	661.22C/D-01	249.32	601.11-19
244.41	252.2X (qty 1 or 2), 252.3X (qty 1), 256 (qty 1)	661.23E/F-01	249.41	601.11-13
244.51	252.2X (qty 1 or 2), 252.3X (qty 1), 256 (qty 1)	661.31E/F-01	249.51	601.11-15



244 244 Actuator Assembly Dimensions

Model	Stroke		Length with Pedestal Base **(A)		Length with Swivel Base **(B)		Load Cell **(C)		Rod End Swivel **(D)	
	mm	in	mm	in	mm	in	mm	in	mm	in
244.11	150	6	779	30.66	868	34.16	66.5	2.62	120.7	4.75
	250	10	1033	40.66	1122	44.16				
244.12	150	6	779	30.66	868	34.16	66.5	2.62	120.7	4.75
	250	10	1033	40.66	1122	44.16				
244.21	150	6	777	30.61	914	35.98	95.3	3.75	196.9	7.75
	250	10	1031	40.61	1168	45.98				
244.22	150	6	762	30.00	956	37.64	121.9	4.8	289.6	11.4
	250	10	1016	40.00	1210	47.64				
244.23	150	6	761	29.96	955	37.59	229.4	9.03	289.6	11.4
	250	10	1015	39.96	1209	47.59				
244.31	150	6	791	31.16	1045	41.16	235.0	9.25	387.4	15.25
	250	10	1045	41.16	1299	51.16				
244.41	150	6	834	32.85	1177	46.35	235.0	9.25	504.7	19.87
	250	10	1088	42.85	1431	56.35				
244.51	150	6	936	36.87	1406	55.37	350.5	13.8	699.8	27.55
	250	10	1190	46.87	1660	65.37				

** Dimensions are lengths with the actuator positioned at mid-stroke.
 *** 100kN Dimension includes spiral pre-load washers for actuators 100kN and larger.
 MTS

Specifications subject to change without notice. Please contact MTS for specifications critical to your application.

244

Model 244 Hydraulic Actuators

244

244 Actuator Order Information

244
244 Actuator

A complete servo-actuator assembly includes the actuator, servovalve, load cell, and swivels. The load cell and rod end swivel require attachment kits for connecting these components to the actuator.

Servovalves, load cells, rod end swivels, and attachment kits for an actuator assembly are selected separately from other section of the catalog.

100-016-993 MTS

244

See MTS Model 244 Product Specification number 100-016-993 for more information.

Capacity

- 244.11 15kN 3,300 lbs
- 244.12 25 kN 5,500 lbs
- 244.21 50 kN 11,000 lbs
- 244.22 100 kN 22,000 lbs
- 244.23 150 kN 35,000 lbs
- 244.31 250 kN 55,000 lbs
- 244.41 500 kN 110,000 lbs
- 244.51 1000 kN 220,000 lbs

Displacement

- 150 mm 6
- 150 mm (6 in)
- 250 mm 10
- 250 mm (10 in)
- 500 mm 20
- 500 mm (20 in)

Rod Thread

-
- English
-
- Metric

Base

- 249 249
- 249 Swivel Base (Does not include the 249 Rod End Swivel)
-
- Pedestal Base

Servovalve Manifold

- 252.2 x
- 252.2X Two Stage Servovalve Manifold (Does not include the valve)
- 252.3 x
- 252.3X Two Stage Servovalve Manifold (Does not include the valve)
- 256.0 x
- 256.0X Three Stage Servovalve Manifold (Does not include the valve)